

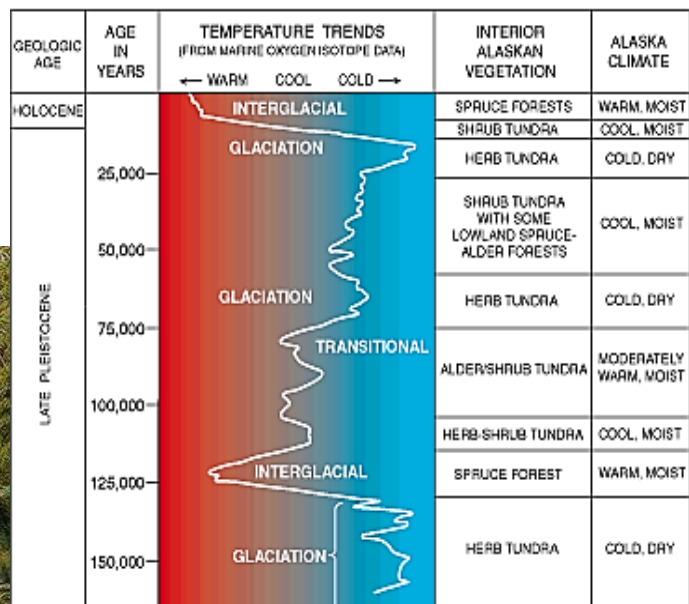
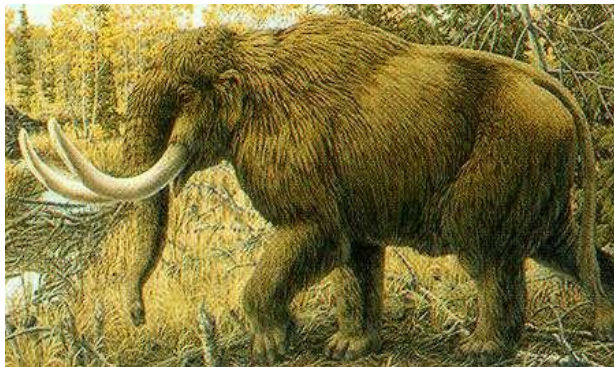
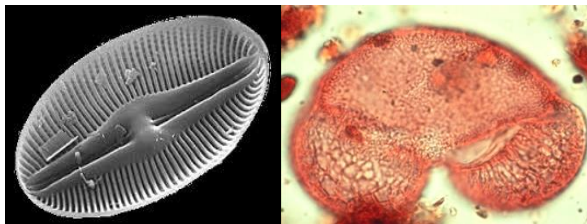
Geography 430:

Global Environments of the Quaternary

Fall 2014, MWF 12:20–1:10 in 401 Burchfiel Geography Bldg

Instructor: Professor Sally Horn

Geography 430 focuses on physical and biological evidence of climate and environmental change over the two to three million year period when humans and their close relatives have inhabited Earth. Lectures and readings will cover how scientists obtain and interpret evidence of Quaternary climate and environmental change, geographical and temporal patterns of change, possible drivers of change, and interrelationships with human society. A significant portion of class time will be used for student presentations, discussions, demonstrations, lab exercises, videos, and talks by guest experts. Demonstrations and lab exercises will give students hands-on experience with some of the methods used to study past environments, taking advantage of extensive ongoing research on this theme by the instructor and others in the Department of Geography, and in other campus departments.



The course is open to all interested students. Geography 131 provides ideal background, but other physical geography, geology, anthropology, or ecology courses can be substituted. Please contact the instructor, Professor Sally Horn (shorn@utk.edu), if you are unsure of your background or have other questions. Thank you!